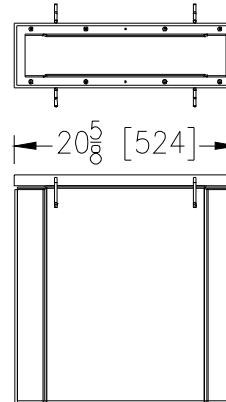
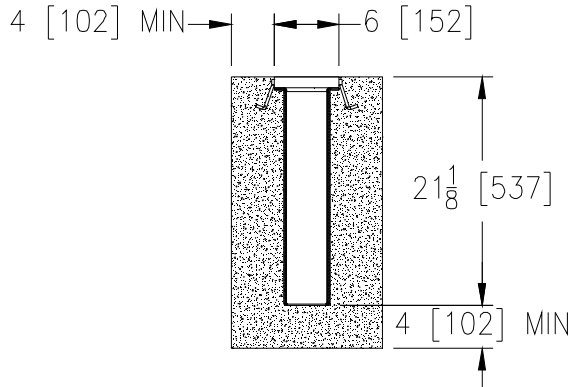


**Z817-6****6 [159] x 20 [510] WIDE REVEAL FIBER
REINFORCED POLYMER CATCH BASIN****TRENCHDRAIN
SUPPLY**

Supplied By:

877-903-7246**www.trenchdrainsupply.com****SPECIFICATION SHEET****TAG** _____

Dimensional Data (inches and [mm]) are Subject to Manufacturing Tolerances and Change Without Notice

SPECIFYING ENGINEER IS RESPONSIBLE FOR
CONCRETE ENCASEMENT AND REINFORCING
BASED UPON APPLICATION AND LOCAL CODES**PREFIX OPTIONS (Check/specify appropriate options)**

- ☐ Z 6 inch by 20 inch Fiber Reinforced Polymer (FRP)*
☐ ZV 6 inch by 20 inch Fiber Reinforced Vinylster

SUFFIX OPTIONS (Check/specify appropriate options)**Outlet Adapters Add/Each**

- ☐ -E4/U4 4 [102] No-Hub End Outlet Adapter
☐ -E6/U6 6 [152] No-Hub End Outlet Adapter
☐ -E8/U8 8 [203] No-Hub End Outlet Adapter

Frame Options

- ☐ -CBF Black Acid Resistant Coated Frame

Grate Options (Load Classifications are per DIN EN1433)

- ☐ -BCD Bronze Circular Decorative Grate - Class A
☐ -BDC Black Acid Resistant Epoxy Coated Ductile Grate - Class C
☐ -BDE Black Acid Resistant Epoxy Coated Ductile Grate - Class E
☐ -BG Galvanized Ductile Iron Bar Grate - Class C
☐ -DC Ductile Iron Solid Cover - Class C
☐ -DGC Ductile Iron Slotted Grate - Class C *
☐ -DGE Ductile Iron Slotted Grate - Class E
☐ -GDC Galvanized Ductile Slotted Grate - Class C
☐ -GDE Galvanized Ductile Slotted Grate - Class E
☐ -GG Fiberglass Grate - Class A
☐ -GHPD Galvanized Heel-Proof Ductile Grate - Class B
☐ -GHPDE Galvanized Heel-Proof Ductile Grate - Class E
☐ -HPD Heel-Proof Ductile Slotted Grate - Class B
☐ -HPDE Heel-Proof Ductile Slotted Grate - Class E
☐ -HPP Heel-Proof Polyethylene Grate - Class A
☐ -LD Ductile Iron Longitudinal Slotted Grate - Class B
☐ -RFG Reinforced Galvanized Steel Slotted Grate - Class B
☐ -RFGC Reinforced Slotted Galvanized Grate - Class C
☐ -RFSC Reinforced Slotted Stainless Steel Grate - Class C
☐ -RPG Reinforced Galvanized Perforated Grate - Class B
☐ -RPGC Reinforced Perforated Galvanized Grate - Class C
☐ -RPGR Reinforced Perforated Galvanized Reverse Punch Grate - Class C
☐ -RPGRG Reinforced Perforated Galvanized Reverse Punch Grate - Class C
☐ -RPSC Reinforced Perforated Stainless Steel Grate - Class C
☐ -RPSRC Reinforced Perforated Stainless Steel Reverse Punch Grate - Class C

Decorative Grate Options (Load Classifications are per DIN EN1433)

- ☐ -BCD Bronze Circular Decorative Grate - Class A
☐ -BDD Bronze Diagonal Decorative Grate - Class A
☐ -DCD Ductile Iron Circular Decorative Grate - Class C
☐ -DDD Ductile Iron Diagonal Decorative Grate - Class A
☐ -DOG Ductile Iron Decorative Grate - Class A
☐ -DTW Ductile Tidal Wave Decorative Grate - Class C
☐ -DWV Ductile Wave Decorative Grate - Class A
☐ -HPB Heel-Proof Bronze Slotted Grate - Class A
☐ -HPS Heel-Proof Stainless Steel Slotted Grate - Class A
☐ -SBG Stainless Steel Bar Grate - Class E

ENGINEERING SPECIFICATION: Zurn Z817-6

Catch Basin are 6 [152] long, 20 [508] wide reveal and 20 [508] deep. The body is made of 0% water absorbent Fiber Reinforced Polyester (FRP) fiberglass. Shall mechanically lock into the concrete surround a minimum of every 10 [254]. Catch basin will weigh less than 11 bs. [5kg] per linear foot. Will be provided with standard DGC grates that lock down with lockdown bars to the basin. Zurn 6 [152] wide reveal Ductile Iron Slotted Grate conforming to ASTM specification A536-84, Grade 80-55-06. Ductile Iron grate is rated class C per the DIN EN1433 top load classifications. Supplied in 20 [508] nominal lengths with 1/2 [13] wide slots, and 3/4 [19] bearing depth. Grate has an open area of 28.1 sq. in per ft. [59.463 sq. mm per meter]. The 1/4 [6] thick Heavy-Duty Frame Assembly conforms to either ASTM specification A36 or A536-84 with 4 - 4 [102] long concrete anchors per basin. The frame is supplied with a powder coated finish. All welds must be performed by a certified welder per ASTM standard AWS D1.1. Frames produced in the U.S.A.

- ☐ -SCD Stainless Steel Circular Decorative Grate - Class B
☐ -SDD Stainless Steel Diagonal Decorative Grate - Class B
☐ -SOG Stainless Steel Decorative Grate - Class B

Miscellaneous Options

- ☐ -FT Foul Air Trap
☐ -IA Inlet Adapter
☐ -VP Vandal-Proof Lockdown
☐ -Y Sediment Bucket

MADE in the U.S.A. (Load Classifications are per DIN EN1433)

- ☐ -AWG Aluminum Wire Grate - Class A
☐ -BDE-USA Black Acid Resistant Epoxy Coated Ductile Grate - Class E
☐ -DCE-USA Ductile Iron Solid Cover - Class E
☐ -DGC-USA Ductile Iron Slotted Grate - Class C
☐ -DGE-USA Ductile Iron Slotted Grate - Class E
☐ -FG Fabricated Galvanized Steel Slotted Grate - Class A
☐ -FS Fabricated Stainless Steel Slotted Grate - Class A
☐ -GDC-USA Galvanized Ductile Slotted Grate - Class C
☐ -GDE-USA Galvanized Ductile Slotted Grate - Class E
☐ -GHPDE-USA Galvanized Heel-Proof Ductile Grate - Class E
☐ -HPDE-USA Heel-Proof Ductile Slotted Grate - Class E
☐ -PG Perforated Galvanized Steel Grate - Class A
☐ -PS Perforated Stainless Steel Grate - Class A
☐ -PPC Plastic Perforated Grate - Class C

Decorative MADE in the U.S.A. (Load Classifications are per DIN EN1433)

- ☐ -BZ Bronze Decorative Grate - Class A
☐ -NBZ-USA Nickel Bronze Decorative Grate - Class A
☐ -PSR Perforated Stainless Steel Raised Grate - Class A
☐ -SWG Stainless Steel Wire Grate - Class A

* Regularly furnished unless otherwise specified.

Zurn Industries, LLC | Specification Drainage Operation
1801 Pittsburgh Avenue, Erie, PA U.S.A. 16502 · Ph. 855-663-9876, Fax 814-454-7929
In Canada | **Zurn Industries Limited**
3544 Nashua Drive, Mississauga, Ontario L4V 1L2 · Ph. 905-405-8272, Fax 905-405-1292
www.zurn.com

Rev. G
Date: 03/20/14
C.N. No. 130729
Prod. | Dwg. No. Z817-6